

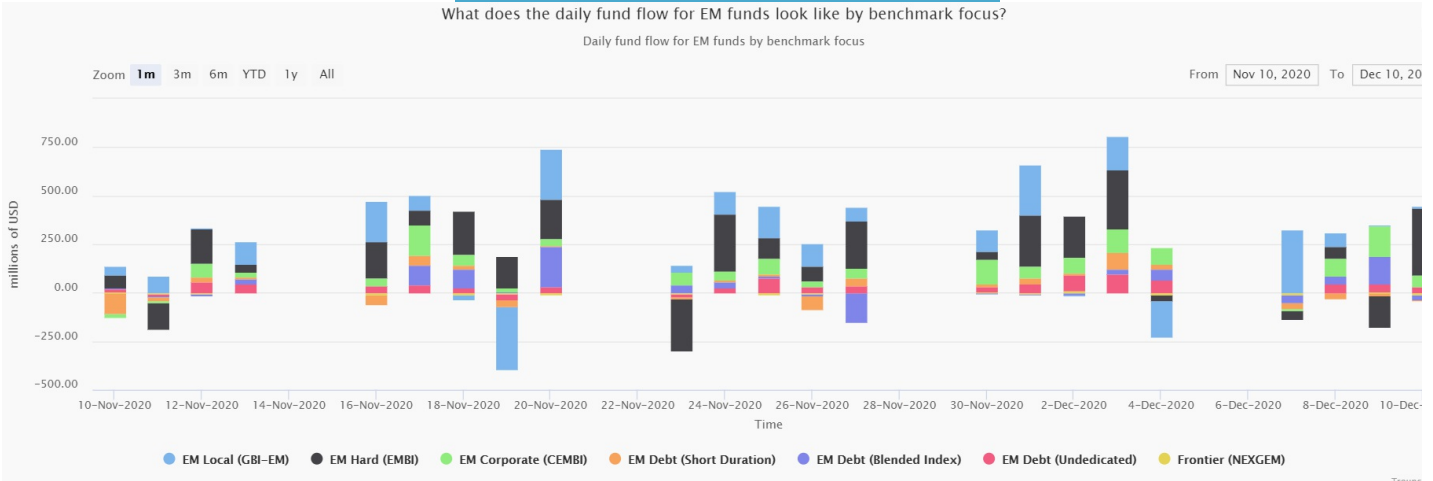
Subject: Daily Fund Flow to EM Debt Funds: Inflow USD 400mn
From: Trounceflow <info@trounceflow.com>
To: [REDACTED]
Date Sent: Friday, December 11, 2020 4:38:28 PM GMT+01:00
Date Received: Friday, December 11, 2020 4:38:29 PM GMT+01:00

T R O U N C E F L O W

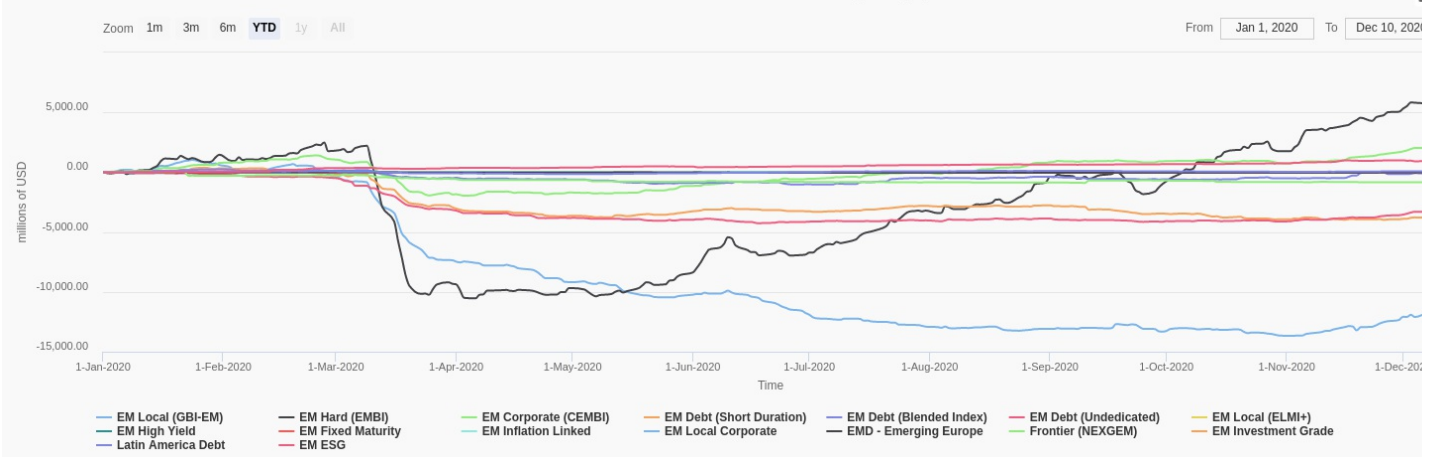
We've calculated an inflow of USD 400mn (0.15% of total AUM) on Thursday 10 December which makes the 5 day total from Friday last week to Thursday this week an inflow of USD 1100mn

[Visit our Daily Fund Flow here](#)

What does the daily fund flow for EM funds look like by benchmark focus?
 Daily fund flow for EM funds by benchmark focus

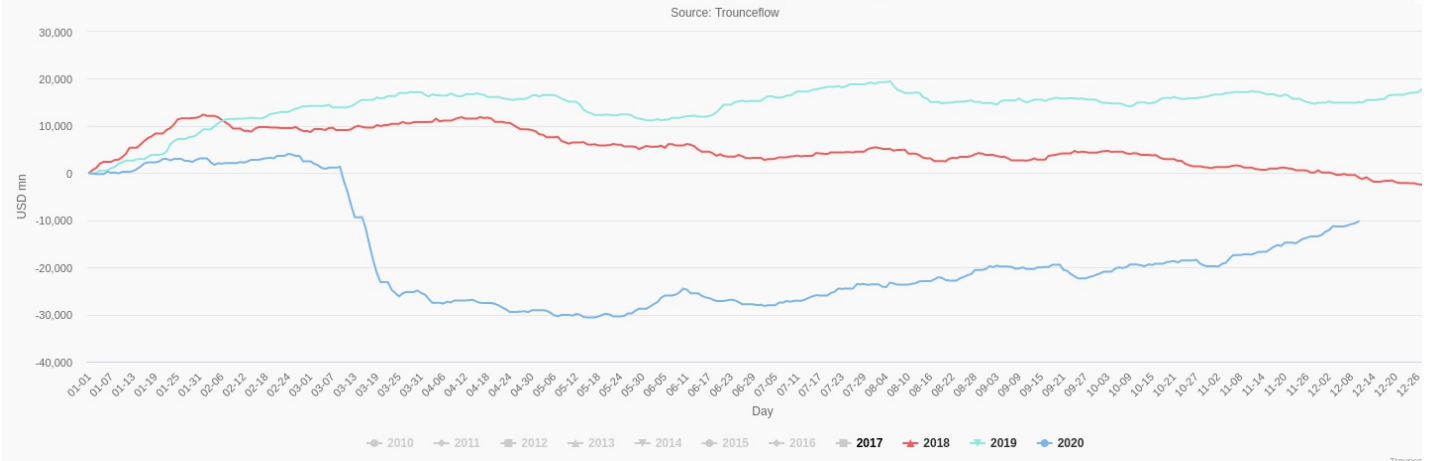


YTD Cumulative Fund Flow of EM Debt Funds by Category



Cumulative Flows by Year (10 Dec 2020)

Source: Trounceflow





[Number of funds and total AUM](#)

Cumulative flow from the start of the year is USD -10,200mn, which is USD 25,300mn less than the flow for the same period of 2019.

Have a great day!
Elene Mamniashvili
Trounceflow



 [\(44\)7887 546080](tel:(44)7887 546080) |  info@trounceflow.com

add info@trounceflow.com to your address book and you'll never miss a thing

The email address info@trounceflow.com is used to communicate information that is specific to you & your organisation and/or your company's relationship with Trounceflow.

Trounceflow Limited is registered within UK with Company registration number 10367410
© 2018 Registered office: Trounceflow, Level 1, Devonshire House, One Mayfair Place, London, W1J 8AJ, United Kingdom

Legal basis for processing under GDPR: Processing is necessary for the purposes of the legitimate interests pursued by Trounceflow (recipients to find relevance in the information received) except where such interests are overridden by the interests or fundamental rights and freedoms of the data subject which require protection of personal data, in particular where the data subject is a child.

If you'd rather not receive this kind of email, please just [unsubscribe](#).